

ProVision 5.1.3

ProVision 5.1.3 is a minor release for local installations with new features and bug fixes.

PHP Compatibility

Please note that ProVision 5.x requires php 5.5.+. For local installations, please upgrade php prior to installing the upgrade. Also ensure that the correct Sourceguardian php extension is loaded for the new version of php.

MySQL Compatibility

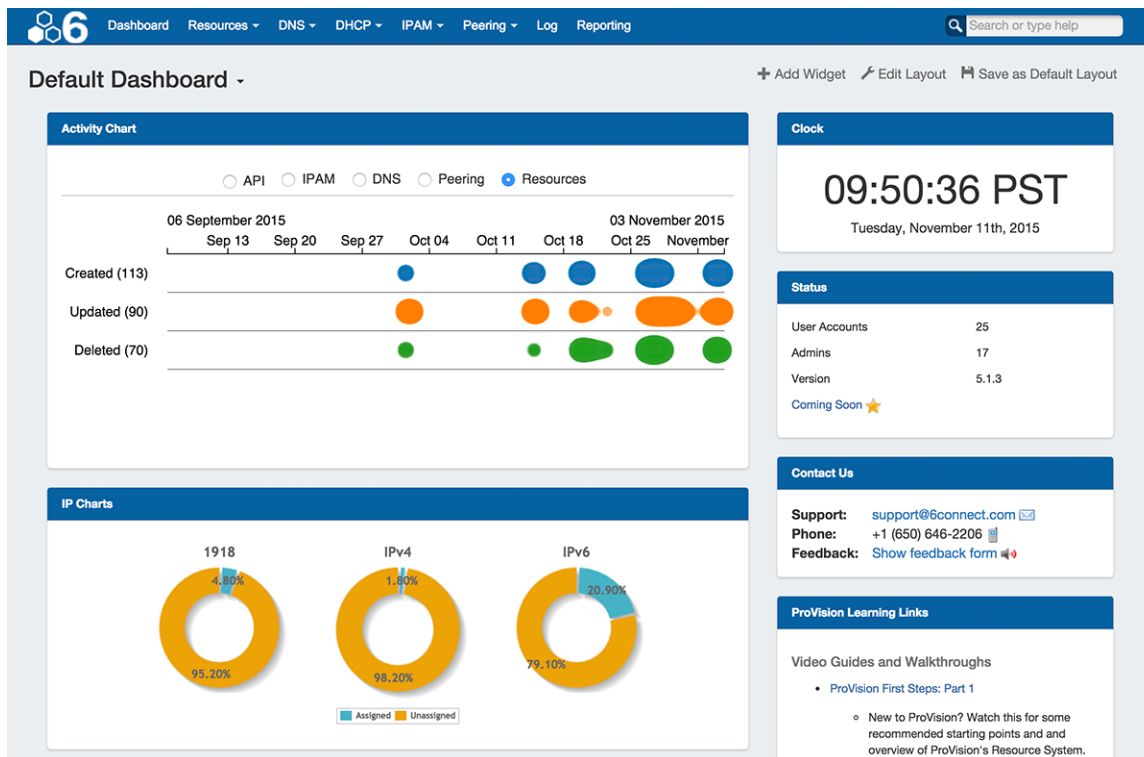
Please note that ProVision 5.1.3 requires mysql 5.6.+. For local installations, please upgrade mysql prior to installing the upgrade.

New Features

(CFR denotes customer requested)

Customizable Dashboards:

The Dashboard Tab has undergone a major UI overhaul, and is now customizable!



The new Dashboard is comprised of modular "Widgets" that show different types of information. These Widgets may be added, moved, and edited to create personalized Dashboards. On top of this, four different column layout options are available to organize the overall Dashboard layout to suit your needs.

Dashboards (excepting the Default Dashboard) are tied to user login, and do not have dependencies or requirements - they are just HTML / Javascript - so no additional installations are required, and users may access the same dashboard between different computers or browsers.

Browser Compatibility

It is recommended to use the most recent versions of the Chrome or Firefox browsers when working with the dashboard. Due to incompatibilities with Internet Explorer, the dashboard is set to read-only mode and is not editable when accessed from IE at this time.

There are two levels of Dashboards:

Default Dashboard: The Default Dashboard is a shared dashboard for all users of the ProVision instance. It may only be edited by admin level users, but it is viewable by all users.

Individual Users' Dashboards: Additional Dashboards may be created by individual users. These dashboards are tied to the user logged in, and are only viewable / editable by that user.

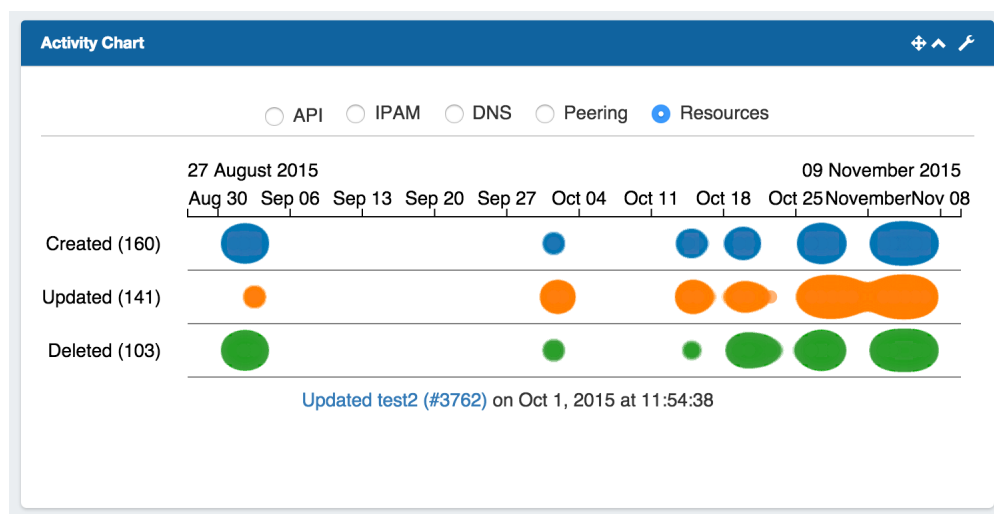
Widgets:

Ten Widgets are currently available for the Dashboard. Widgets vary in purpose from static display of text elements (Markdown, Status), to highly interactive (Activity Chart, Resource Tree). Only Admin users may add or edit Widgets for the Default Dashboard; however, any user may create a personal dashboard tied to their login, and add, move, or edit Widgets for that dashboard without impacting others.

A User's permissions apply to data inside of Widgets, therefore, some users may be limited to only viewing certain data for a Widget (ie, Resource Tree).

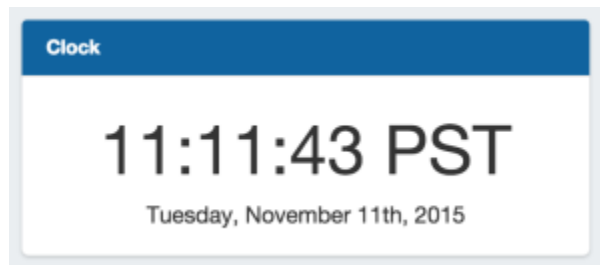
Below is a brief overview of each available Widget:

Activity Chart (Viewable by Admins Only): Illustrates activity level for API, IPAM, DNS, Peering, and Resource areas of ProVision.



Select the desired ProVision area by clicking on the radio buttons. Then, hover over the chart, and use the mouse scroll wheel to zoom in or out of specific date / times. Clicking on a bubble will show activity detail, and resource / IP block links if applicable.

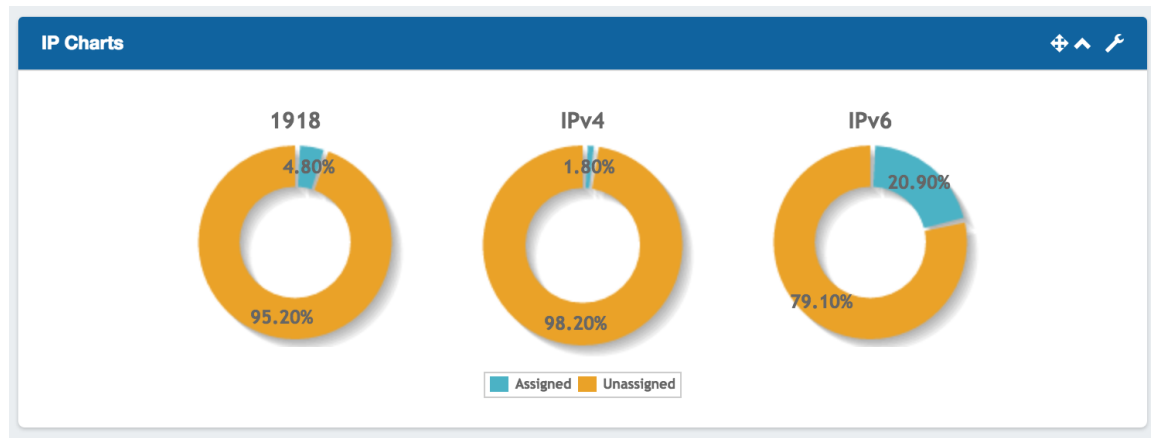
Clock: Shows the current time and date for the selected time zone, based on format set by the user.



Status: General status information on number of user / admin accounts, ProVision version number, and a 'Coming Soon' link to the future releases roadmap in the the documentation.

Status	
User Accounts	23
Admins	15
Version	5.1.3.
Coming Soon ★	

IP Charts: Illustrates the percentage of assigned vs unassigned hosts for 1918 / IPv4 / IPv6 space out of the total available hosts in ProVision viewable by the user.



Contact Us: Provides support email, phone, and feedback form information.

Contact Us

Support:

support@6connect.com

Phone:

+1 (650) 646-2206


Feedback:

Show feedback form

Support phone number and email address are set from the ProVision Admin settings. The feedback form email address is editable within the Widget.

Markdown Widget: The Markdown Widget is a blank slate where users may add links, text, or other content through use of the Markdown language.

ProVision Learning Links

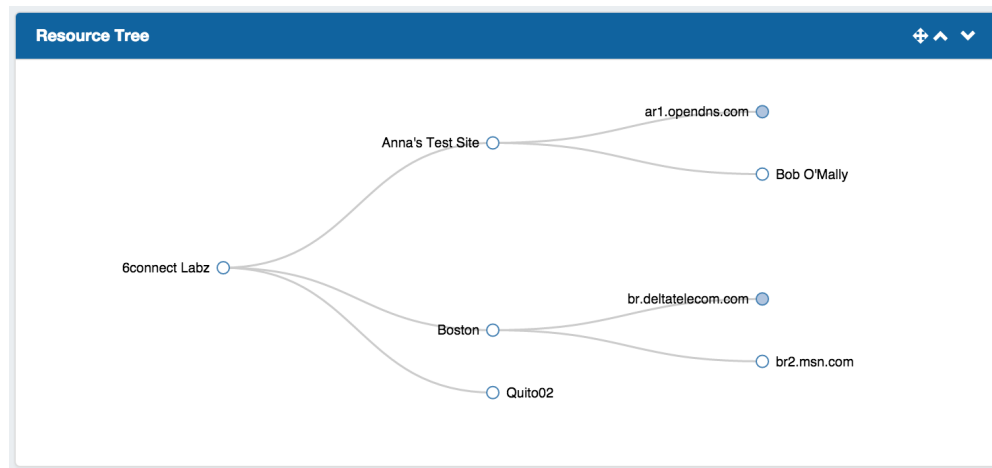


Video Guides and Walkthroughs

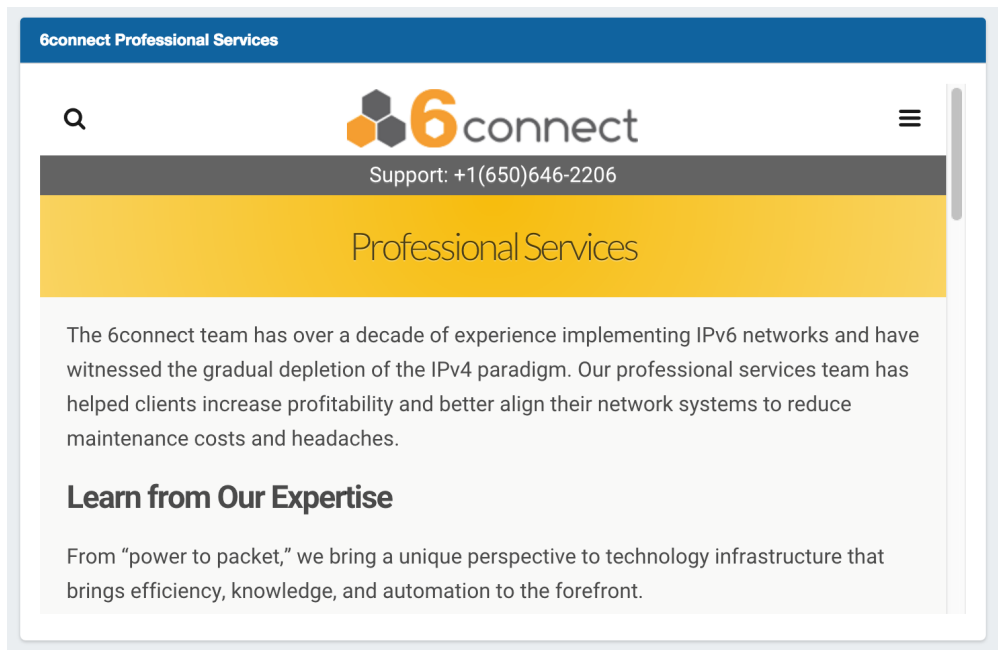
- [ProVision First Steps: Part 1](#)
 - New to ProVision? Watch this for some recommended starting points and an overview of ProVision's Resource System.
- [ProVision First Steps: Part 2](#)
 - This continuation of our First Steps series gives a high level overview of data import tools available in ProVision.
- [Users & Permissions Overview](#)
 - An overview of adding and editing users and permissions from the ProVision Admin 'Users' tab.

Documentation Resources

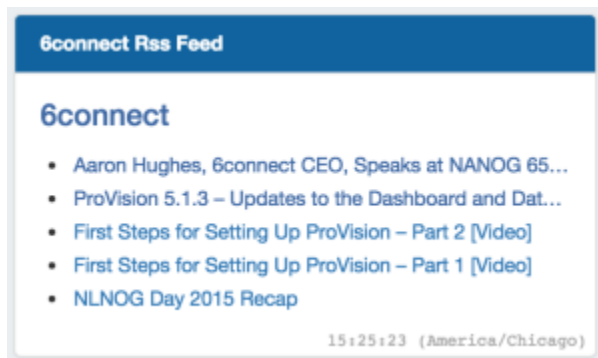
- [Getting Started](#)
- [First Steps](#)
- [Import Your Data](#)
- [Import Aggregate Blocks](#)



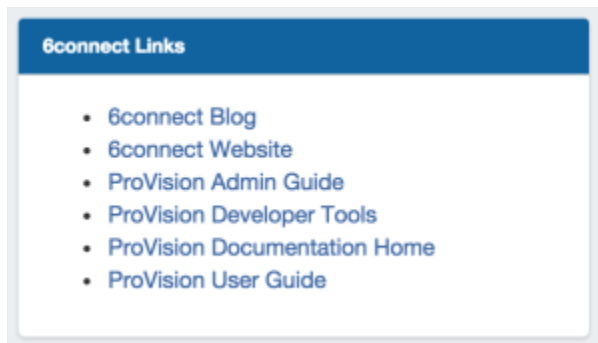
iFrame Widget: The iFrame Widget sets a https URL to be viewed in an iFrame, to view stats or commonly referenced websites.



RSS Feed Widget: Shows the most recent five entries of a selected [https](#) RSS Feed. Feed links open in a new window when clicked.



Links Widget: Shows a list of links. Link URL and display may be set from within the Widget.



For more details on the Default Dashboard, editing dashboards, and working with individual Widgets, see:

- [The Dashboard](#)
- [Customizing the Dashboard](#)
- [Working with Dashboard Widgets](#)

VLAN Manager

A new, integrated VLAN management system has replaced the previous VLAN text field. Under the new system, administrative users can create VLAN domains, enable numerical or named VLANs under each domain, and then associate IP blocks with a domain / VLAN pair. Also included in this feature is a VLAN tag system allowing individual VLANs or ranges of VLANs to be associated with user-defined tags for additional organization and search functionality.

Impacts to Current Customers:

For current customers who have been using the VLAN field in IPAM, existing VLANs in your IP Blocks will be migrated as numerical VLANs under the Default Domain.

Customers using the ProVision API for IPAM functions and using the VLAN text field will need to update their API calls.

Those customers who are not actively using the VLAN field, or are not using the ProVision API for IPAM functions will not be affected.

Changes included in this feature:

- A new "VLAN Admin" tab under the administrative area of ProVision for creating and managing VLAN domains and VLAN tags. See VLAN Administration and [Working with VLANs](#) for workflow and task details.
- A VLAN submenu accessible under the IPAM module including:
 - Areas where VLANs may be enabled for domains, edited, and associated with IP Blocks (via Direct, Browse, and Smart Browse type assigning)
 - VLAN utilization charts illustrating IP block utilization under each domain/VLAN pair.
 - A "VLAN Manage" page similar in function and scope to IP Manage, but for blocks organized under specific domain / VLAN pairs.
 - See VLAN Administration and Working with the VLAN Manager for workflow and task details.
- Updated IPAM and IPAM Gadget interfaces where the previous VLAN text input box has been replaced with selectable Domain / VLAN dropdowns. See updated information in [Working with IP Blocks](#).
- Updated IPAM and VLAN API calls. See API Module - VLAN for the most recent VLAN API calls.

Resource Cloning / Template:

Cloning an Entry duplicates the Entry and, if desired, any Child Entries existing under it.

This feature can be used to quickly and efficiently create multiple resources with same format, field information, or similar hierarchy structure. See [Working with Entries](#) for additional information.

Information Cloned: Format of the original Resource (which gadgets are enabled, location, fields), contact / tech information, field information, and (if selected) Child Entries, and Child Entry sections, fields, and field information - in general, items that are chosen or input at the entry creation, or input into text fields.

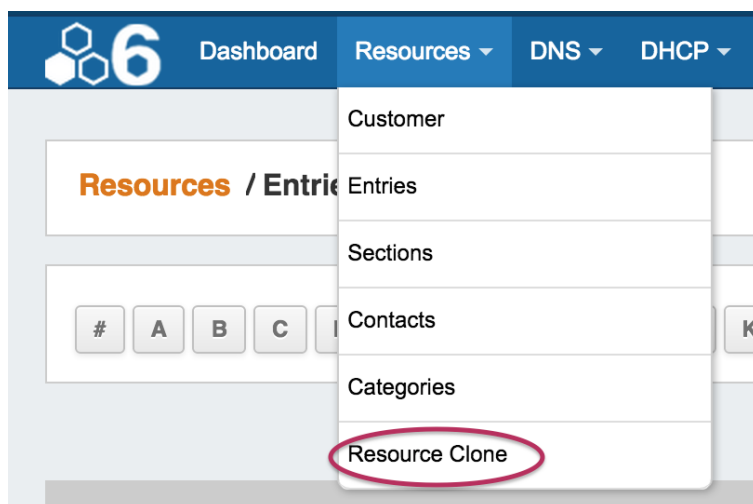
Information not Cloned: IP Blocks, DNS Zones, uploaded documents - in general, items that are *assigned* to the entry rather than input into fields.

Click below for an overview on how to clone a Resource:

To Clone a Resource:

The Resource Clone feature may be accessed from either the [Resources](#) Tab dropdown menu, or from a Resource Entry page.

From the [Resources](#) Tab dropdown, select "Resource Clone". This will take you to the Resource Clone page.



You may also select "Clone" from the bottom of a Resource Entry page, in which case the Entry page you clicked "Clone" from will be automatically selected as the resource to clone.

Fields

Abuse POC:
Bob Smith
GIS Data:
No

Clone
Add Child
Edit

Child Entries

Name	Type	Category
NewChildEntry	Data Center	Uncategorized

Once on the Resource Clone Page, enter the Resource to clone, Parent Resource, and the New Name for the clone. If you wish for all children of that resource (and their children, if applicable) to be cloned, check the "Clone Resource Children" checkbox. When complete, click the "Clone Resource" button.

Resources / Clone

Resource Clone

Resource to clone :
MyNewEntry
Parent Resource :
TLR
New Name :
MyNewEntry2
Clone Resource Children : ☒

Clone Resource

CFR-103: One-Click IPAM Aggregate Manage:

In the IPAM tab, Clicking on the header for an aggregate now directly opens up the Manage screen for that aggregate.

Click on the header for the aggregate (CIDR / Region) to open Manage Aggregate screen.

Scheduler Updates:

Multiple updates have been made to the scheduler:

- Task List Filters: The Task Scheduler can now be filtered! Radio button filters have been added under the time information.

Select "Show: All" to see all tasks scheduled, or "Show: Active" to only show active tasks.

You may also use the text input filter box, located above and to the right of the task list, to filter tasks by Name or Repeat Info keyword.

Scheduler

Server Time: 2015-11-17 12:15:13 PST
Server Timezone: America/Los_Angeles -08:00

Show: ☐ Active ☒ All ← Show all tasks or active only

Filter by task name or repeat info keyword →

Name	Repeat Start	Repeat Info	Last Run	Active				
IPAM Utilization Alerts	2015-Jun-26	Every day at 08:00 PST	2015-11-09 06:00:02 PST	<input type="checkbox"/>	Details	View History	Run Now	Delete
Backup Daily	2015-Nov-03	Every day at 20:00 PST	2015-11-14 18:00:02 PST	<input checked="" type="checkbox"/>	Details	View History	Run Now	Delete
QA 5.1.3 Holding - Daily	2015-Nov-03	Every day at 18:00 PST	2015-11-16 16:00:01 PST	<input checked="" type="checkbox"/>	Details	View History	Run Now	Delete
QA Test Daily	2015-Nov-16	Every day at 11:15 PST	2015-11-17 09:15:01 PST	<input checked="" type="checkbox"/>	Details	View History	Run Now	Delete

[Add Task](#)

- Clarified time zone display to represent the time zone selected in Admin - Application Settings - Timezone.
- UI elements such as selector lists and calendar pickers have been updated.

IM- 1957: Chart View Improvements:

An Action Menu has been added to entries in Chart View, allowing users to view, edit, clone, and delete entries.

From Chart View, left click on the Action Menu (wrench icon) to access links to the view, edit, clone, and delete functions.

IM-1944/1945: DHCP Gadget Improvements

The DHCP Gadget has improved searching and Smart Assign capabilities:

- Improved searching of pools by Name, MAC, or IP address

Linked Pools:

In the DHCP Gadget, select "Name", "MAC", or "IP" from the dropdown above the linked and existing pools lists. Enter the search criteria based on your selection:

Name: Enter the text of the full or partial name of the pool

MAC: Enter the full (ex: 00:11:22:33:44:55:66:77) or partial (:22) MAC address associated with the pool, ensuring that a colon is included in part of the search text.

IP: Enter the full IPv4 or IPv6 CIDR of the block associated with the pool (ex: 10.0.0.0/24)

+ DHCP Pools

Linked Pools

Quito Lab 1 [Subnet]

Existing Pools:

Existing Pool search uses the same criteria options as the linked pools, with the added ability to include "Region" or "Resource" criteria for IP Search:

Existing Pools → IP ▾ Region ▾ Select a Resource ▾ 2607:fae0:7000::10/128 **Search**

6connectTest [Subnet]

After selecting the search type and entering your search term, hit the "Search" Button and the Pools list will be filtered to matching results.

- DHCP pool Smart Assign can now use Region, Resource, and VLAN criteria for assigning

Additional criteria options of Region, Resource, and VLAN (Domain / VLAN) are available for smart assigning a new DHCP Pool.

+ Create a New DHCP Pool

Create a new Subnet ▾

Subnet Name: NewPool (ex: Lab #1)

New IP Assignment: Smart ▾ IPv4 ▾ 32 ▾ Chicago, IL ▾ Select a Resource ▾

Domain and VLAN → DefaultDomain ▾ 102 ▾

Free Lines:
No lines saved.

Add a New Line: **Add**

Add Pool

Enter your criteria, then click "Add Pool".

(A DHCP aggregate must already exist with the selected Regions / Resource / Domain / VLAN properties for the assignment to succeed.)

CFR- 107: Set Default Tag Radio Behavior

The IPAM Configuration page now has a setting to select the "Default Tag Selection Mode". This sets which radio button will be selected by default when working with tags in the IPAM Gadget.

Selecting "Standard", "Strict", or "Exclude" will set that option as the default when working in the IPAM Gadget.

IPAM Configuration

Holding Tank Days

IPv4 Block Scanner Enable ☒

IPv4 Block Scanner Max Block Size

Regions Enable ☒

Generic Code Per Block Enable ☒

Generic Code Per Block Display ☒

Generic Code Per Block Name

RIPE Database ☒ RIPE ☐ TEST

Show /32 or /128 mask for statics ☒

Merge after unassign ☒

When enabled, ProVision will merge unassigned blocks into the largest possible block within an aggregate

Enable Map View ☒

Default Tag Selection Mode

☒ Standard
☐ Strict
☐ Exclude

Update [Back To IPAM Admin](#)

IM - 2014: Search Improvements

- Various efficiency improvements have been made for faster search returns.
- The search screen now highlights the search term in the return data.

CFR / IM-1954 IPAM API Update

The IPAM API - Get call now has a parameter "&lastUpdateTime" to query for IPAM blocks based on the last updated time. Timestamp format is in MySQL datetime format. Query may be made for blocks updated before, after, or at the exact time of the timestamp provided. See [API Module - IPAM "Get"](#) call for additional detail.

- To return blocks updated at the exact time provided, use =[MySQL datetime format] :
api/v1/api.php?target=ipam&action=get&lastUpdateTime=2015-8-19 21:08:54
- To return blocks updated prior to the given datetime, use =[MySQL datetime format]:
api/v1/api.php?target=ipam&action=get&lastUpdateTime=2015-8-19 21:08:54
- To return blocks updated after the given datetime, use =[MySQL datetime format]:
api/v1/api.php?target=ipam&action=get&lastUpdateTime=2015-8-19 21:08:54

Updated Resource Entry List Page

The Resources - Entries page now has action menus for each resource listed.

6

DashboardResourcesDNSDHCIPIAMPeeringLogReporting

Search or type help

Resources / Entries

#A B C D E F G H I J K L M N O P Q R S T U **V** W X Y Z

Add Entry

Table viewChart view

Search Resources...

Category	Section	Name	Total Allocations	Zone Count	
		Verizon	0	0	
		Vt-Josh	0	0	
		Virtual DC 1	0	0	
		Vista Print	0	0	
		vm1.foo.com	0	0	
		Vodacom Customer	0	0	
		vpn1.alliancedata.com	0	0	
		VRF-ABC	0	0	
		VRF-Blue1	0	0	

Clicking on the Action Menu in the Entry List View will bring up the following options:

- View:** Opens the resource's Entry page
- Edit:** Opens to the resource's Edit page
- Clone:** Opens the clone resource page for the selected resource
- Delete:** Deletes the resource, if appropriate permissions exist.

IM-1958: Improved IPAM Parent Tree View

IPAM Parent / Tree View now shows applicable Tag, Notes, and Region details for blocks.

In the IPAM Tab, under IPAM Manage for an aggregate, enter Parent / Tree View by selecting multiple masks and click "Apply". In this view, clicking on a parent block link expands into a detailed tree list showing child blocks. This list now has additional detailed information.

1.0.10.0/24 (1.0.10.0 - 1.0.10.255) Tags Used: AAA, BBB, Customer Regions Used: ASH1, CHP

Filtered by: Mask: 24, 25, 26, and 6 more... Search within this aggregate Search

Filter By: Mask LIR ASN Tags Region Code VLAN Assigned To Apply Clear Make Default

Export Current List to CSV

Address	Hosts	LIR	Region	Notes	Tags	Generic Code	VLAN	Assigned To	Updated
1.0.10.0/24	256							123 Department LAB	2015-01-28
+ 1.0.10.0/25									
+ + 1.0.10.0/26									
+ + + 1.0.10.0/27									
+ + + + 1.0.10.0/28									
+ + + + 1.0.10.16/28									
+ + + + + 1.0.10.16/29 – Assigned to 123 Department LAB									
+ + + + + 1.0.10.24/29									
+ + + 1.0.10.32/27									
+ + + + 1.0.10.32/28									
+ + + + + 1.0.10.32/29									
+ + + + + 1.0.10.32/30									
+ + + + + + 1.0.10.32/31									
+ + + + + + + 1.0.10.32/32 Customer, Champaign, IL, CODE, Some Notes, – Assigned to 123 Department LAB									
+ + + + + + + 1.0.10.33/32 Customer, Champaign, IL,									
+ + + + + + + 1.0.10.34/31									
+ + + + + + + 1.0.10.34/32 BBB, Customer, Champaign, IL, EDOC, More Notes, – Assigned to 123 Department LAB									
+ + + + + + + 1.0.10.35/32 Customer, Champaign, IL, whimsical, – Assigned to 123 Department LAB									
+ + + + + + 1.0.10.36/30									
+ + + + + 1.0.10.40/29									
+ + + + 1.0.10.48/28									
+ + + + + 1.0.10.48/29 – Assigned to 123 Department LAB									
+ + + + + 1.0.10.56/29									
+ 1.0.10.64/26									
+ + + 1.0.10.64/27									
+ + + 1.0.10.96/27									
+ + + + 1.0.10.96/28									

Now with more detail!

IM-1889: Contacts Updates

Various improvements have been made to the Contacts system

- Improved handling of limited permissions in the Contact Manager and Contact Gadget.
- Cleaned up some UI elements (duplicate headers)
- In the Contact Gadget, the ability to add and delete roles has been limited to Admin users. Non-admin users may still set existing roles.

To select an existing role to apply to the contact, under "Select Role" choose a role from the dropdown, and click "Set Role".

Admin users may add a new role by typing the role name in the input box under "Add New Role", then click "Add".

Admin users may delete an existing role by selecting the role from the dropdown under "Delete Role", then click "Delete".

Select Role

Admin POC

Set Role

Add New Role

Add

Delete Role

Delete

Bug Fixes

- IM- 1887: Selecting a backup server in Admin- Backup Settings will now only show servers
- IM- 1901: Added the ability to delete roles from the contacts gadget (Admin users only)
- IM- 1923: Resolved DNS zonelist search error when clearing, replaced "Clear" button with "x" in search field
- IM- 1928: Fixed an issue where assigned contacts would sometimes not show in the contacts gadget if using Firefox
- IM- 1933: Resolved an issue in Resource Import from csv where changes at data review were unable to saved
- IM- 1937: Cleaned up UI on User Preferences - Password Reset form
- IM- 1938: Added warning message to Password Reset when user submits empty fields
- IM- 1943: Deleting a DHCP IP Block on the IPAM management page will also now delete all DHCP Pool Resources that are associated with that DHCP IP Block
- IM- 1951: Adding a duplicate contact via the contact gadget no longer removes all contacts from the gadget
- IM- 1956: Added pagination to filtered resource list page

IM- 1974, IM- 2019: Revised various button styles to display as blue with white text
IM- 1975: Resolved issue where a Resource Search for LAN resulted in page not found.
IM- 1978: Fixed error when selecting a country during creation of a local contact
IM- 1979: Removed duplicate headers in the Contacts: Assigned To section and the Contact Gadget
IM- 1982: Treeview now performs correctly in Firefox
IM- 2005: IPAM Default Map View no longer requires a manual page refresh to view after setting
IM- 2018: DNS Allow Duplicate reverse zones can no longer be unchecked by clicking the "update" button
IM- 2029: Resolved issues with a Limited Permission user adding DHCP server
IM- 2050: Updated backup php and mysqldump paths in template
IM- 2083: Removed DNS viewzone "refresh" button