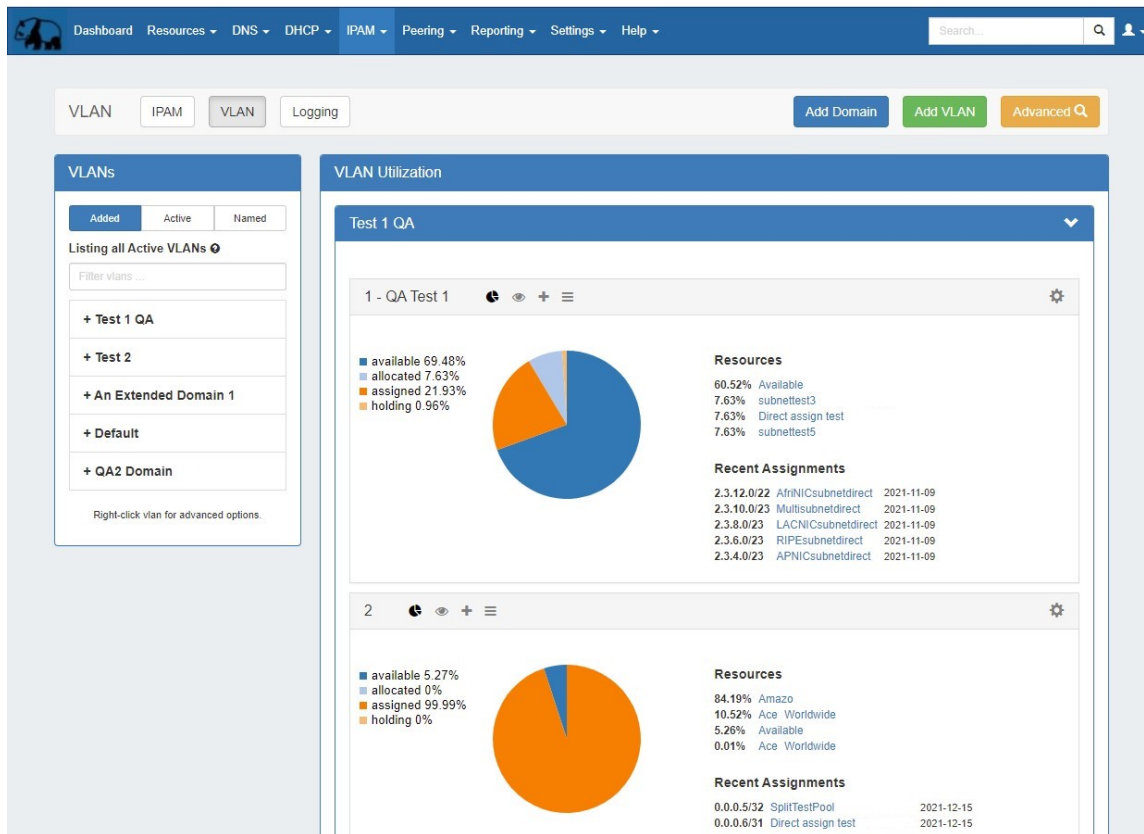


Working with Domains

Working with Domains



This page provides detailed instructions on performing specific tasks in the VLAN Manager. Before reading this section, please ensure that you are familiar with navigating to the VLAN areas, including the VLAN Sidebar, VLAN Utilization area, VLAN Manage, and VLAN Advanced. For a broader overview of the VLAN system, its workflow, and basic navigation through the available VLAN pages, please refer to the [VLAN](#) page.

- Working with Domains
 - Viewing / Managing Domains
 - VLAN Sidebar
 - VLAN Utilization
 - VLAN Advanced (Global View)
 - Add Domain
 - Add a Domain - Numbering Authority Type
 - Add a Domain - Manually
 - Edit Domain
 - Remove Domain
- Additional Information

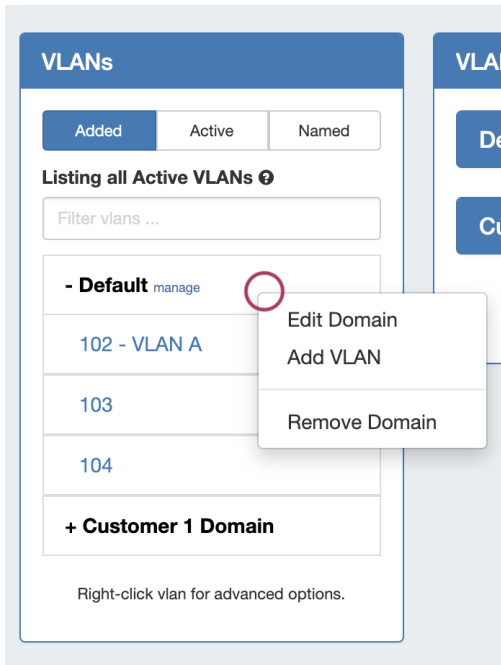
Working with Domains

Viewing / Managing Domains

You may view active domains from the VLAN Home Sidebar, the VLAN Home Utilization area, or from VLAN Advanced.

VLAN Sidebar

The VLAN sidebar lists the domains and VLANs that have been added. Here, you can search for domains / VLANs by name, filter by Added /Active/Named status, and access common tasks.

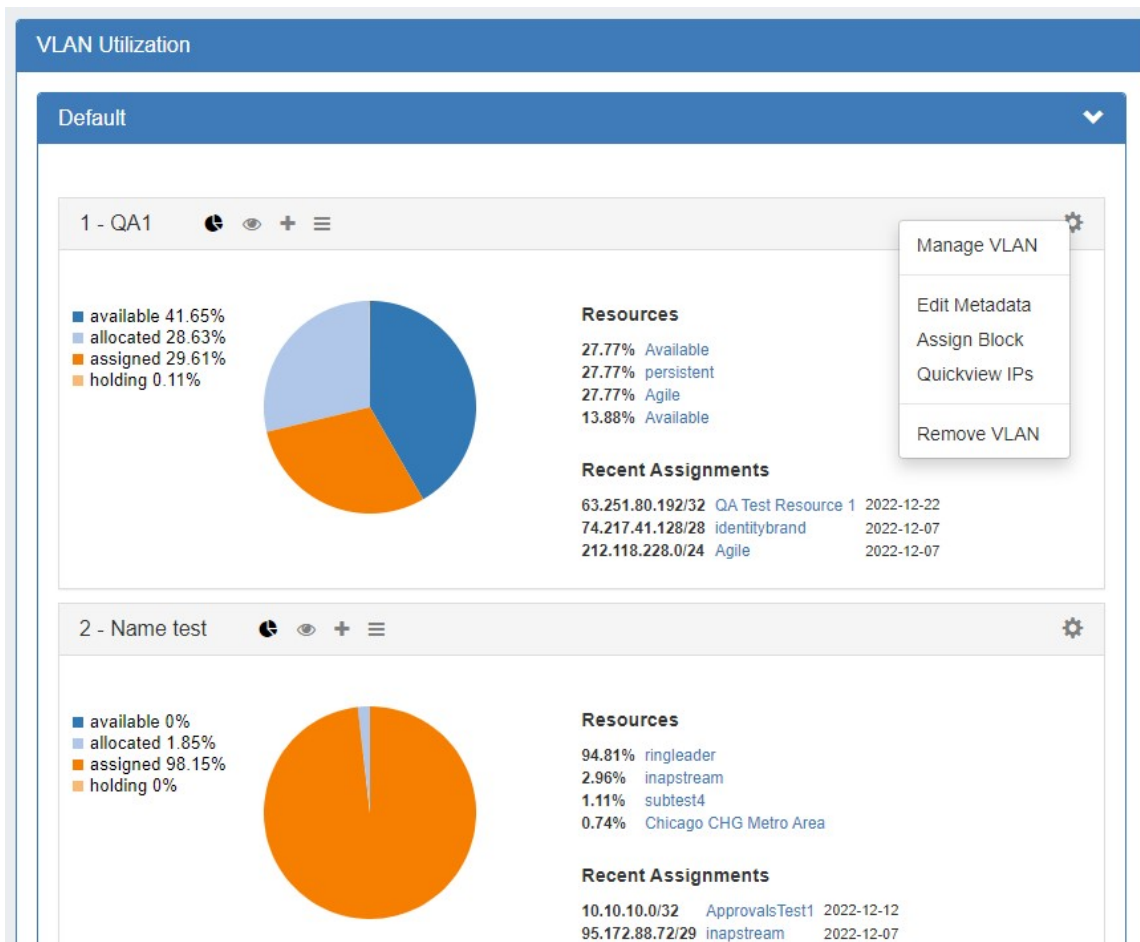


VLAN Sidebar Domain Actions:

- Click on a domain name to show/hide the VLANs contained under that domain
- Click "manage" next to the domain name to open VLAN Advanced for that domain
- Right click on a domain to open options to:
 - Edit Domain - Opens VLAN Advanced Edit Domain panel for that Domain
 - Add VLAN - Opens the Add VLAN page for that domain
 - Remove Domain - Deletes the domain and all VLAN data under it

VLAN Utilization

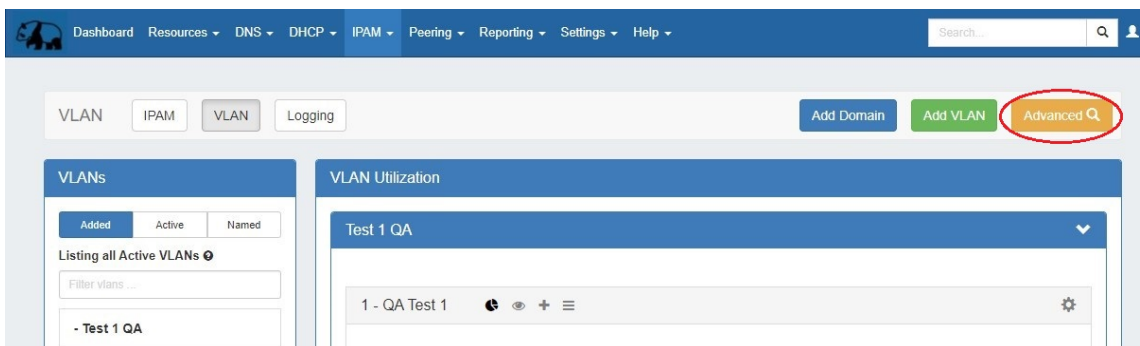
The VLAN Utilization area displays all domains and VLANs in collapsible modules. Here, you may view all VLANs under a domain with their utilization data, and perform VLAN level managements tasks.



VLAN Advanced (Global View)

VLAN Advanced displays a sortable and filterable list of all the domains / VLANs and the associated metadata.

Open VLAN Advanced by clicking the Advanced button.



From this page, you may add domains or VLANs, edit a domain (by clicking the "List" icon), export the list, and perform various actions from the VLAN Action Menu (right click on a VLAN entry).

VLAN IPAM VLAN Logging

Add Domain Add VLAN

VLAN Manage Advanced - Global

Active VLANs

Switch to Parent view export to CSV

Search

clear filter >

Domain	VLAN	VLAN Name	Numbering Domain	Metadata1	Metadata2	Metadata3	Metadata4	Metadata5	
Test Domain 1	1	QA1	Automatic Numbering Doma...	test	test	test	test	test	
Test Domain 1	2	Name test	Automatic Numbering Doma...	test1	test1	test	test	test	
Test Domain 1	3	Test42	Automatic Numbering Doma...	test	-	test	-	-	
Test Domain 1	4	-	Automatic Numbering Doma...	-	-	-	-	-	
Test Domain 1	5	-	Automatic Numbering Doma...	-	-	-	-	-	
Test Domain 1	6	-	Automatic Numbering Doma...	-	-	-	-	-	
Test Domain 1	7	-	Automatic Numbering Doma...	-	-	-	-	-	
Test Domain 1	8	-	Automatic Numbering Doma...	-	-	-	-	-	
Test Domain 1	9	-	Automatic Numbering Doma...	-	-	-	-	-	
Test Domain 1	10	-	Automatic Numbering Doma...	-	-	-	-	-	

VLAN Advanced (Global View) Actions:

- Sort the list by clicking the column header(s)
- Filter the list by clicking on the "filter >" link, then select the filter criteria and click Apply
- Search for a specific domain name, VLAN name, VLAN number, or metadata field value by typing the search term into the search box, then hitting *enter* or click the Search icon.
- Export the list to .csv by clicking "export to CSV" in the list header
- Edit or remove a domain by clicking on the Edit Domain panel (list icon)
- Add domains or VLANs by clicking the Add Domain or Add VLAN buttons

Additionally, you may right-click on any VLAN while in this view to open a VLAN action menu with the following options:

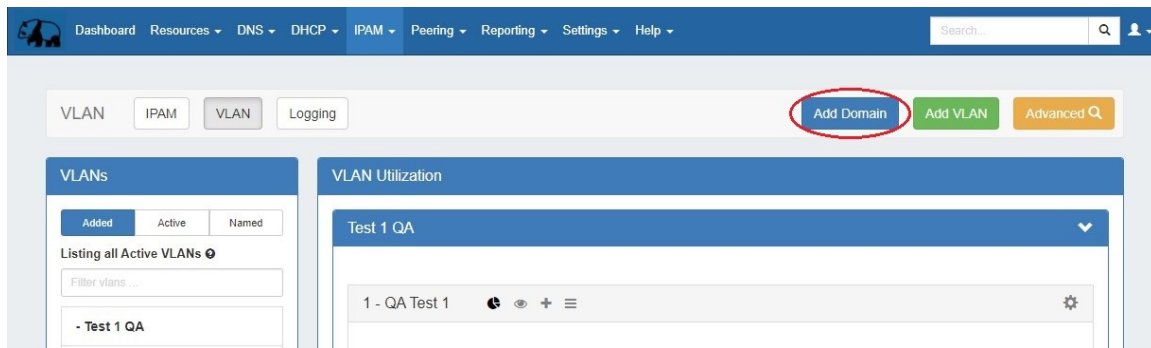
Domain	VLAN	VLAN Name	Numbering Domain	Metadata1	Metadata2	Metadata3	Metadata4	Metadata5	
Test Domain 2	1	Another Test	Automatic Numbering Doma...	-	-	-	-	-	
Test Domain 2	2	-	Automatic Numbering Doma...	-	-	-	-	-	
Test Domain 2	3	-	Automatic Numbering Doma...	-	-	-	-	-	
Test Domain 2	4	-	Automatic Numbering Doma...	-	-	-	-	-	
Test Domain 2	8	-	Automatic Numbering Doma...	-	-	-	-	-	
Test Domain 2	9	-	Automatic Numbering Doma...	-	-	-	-	-	

Edit VLAN
Edit Domain
Manage VLAN
Remove VLAN
Remove Domain

- Edit VLAN (opens the Edit VLAN panel for that VLAN)
- Edit domain (opens the Edit Domain panel for the VLAN's domain)
- Manage VLAN (links to the VLAN Manage page for the VLAN)
- Remove VLAN
- Remove domain

Add Domain

Add a new domain by clicking the Add Domain button at the top of the VLAN Home page.



This opens the "Add Domain" page. Here, you can choose to add a domain by using a pre-set Numbering Authority range, or by creating a new range manually.

Numbering Authority Ranges

Two default **Numbering Authority** VLAN ranges are provided, one for a Cisco Standard domain, and another for a Cisco Extended Domain. These default ranges use Cisco Standard and Cisco Extended range extents and exclusions:

↑ Name	↑ Reuse values	↑ Type	Actions
Cisco Router VLAN Numbering Domain Template	Yes	Multi-range Ranges: 1-1001 Excluded Ranges: 1002-1005	Get Next Value View Assigned Values Delete
Cisco Router VLAN Extended Numbering Domain Template	Yes	Multi-range Ranges: 1-4094 Excluded Ranges: 1,3968-4047,4094	Get Next Value View Assigned Values Delete

Admins may create new pre-set **Numbering Authority** ranges at any time to support other router types, range extents, or exclusions. Those ranges will then be available as options when adding a new domain from the VLAN area.

Add a Domain - Numbering Authority Type

In the Add Domain section, under Domain Information, enter a new domain name.

Under Domain Range, select to use an existing Numbering Authority range for your domain. If desired, you may choose to add VLANs to the domain at the same time, by specifying the VLAN or VLAN range(s) - any exclusions will automatically be skipped.

 The screenshot shows the 'Add Domain' form with three main sections: 'Domain information', 'Domain range', and 'Add VLANs (optional)'. In the 'Domain range' section, the 'Existing Numbering Authority Range' radio button is selected. Below it, the 'Numbering Schema' dropdown is set to 'Cisco Router VLAN Numbering Domain Template'. In the 'Add VLANs (optional)' section, the 'VLANs' field contains '1-1000'. The 'Add Domain' button at the bottom right is circled in red.

When done, click Add Domain. The new domain will be added to the VLAN Sidebar, along with any added VLANs.

Add a Domain - Manually

To add a new manual domain range, enter the domain name and select Manual for the Domain range Type. Once Manual has been selected, fields will display to enter the range extents (such as 1-1000), and range exclusions (here, 1, 5-7). If desired, you may choose to add VLANs to the domain at the same time, by specifying the VLAN or VLAN range(s) - any exclusions will automatically be skipped.

Add Domain

Domain information

Domain Name:

Some New Domain

Domain range

Type: ☐ Existing Numbering Authority Range ☒ Manual

Range Extents:

1-1000

Range Exclusions:

1,5-7

Add VLANs (optional)

VLANs:

1-1000

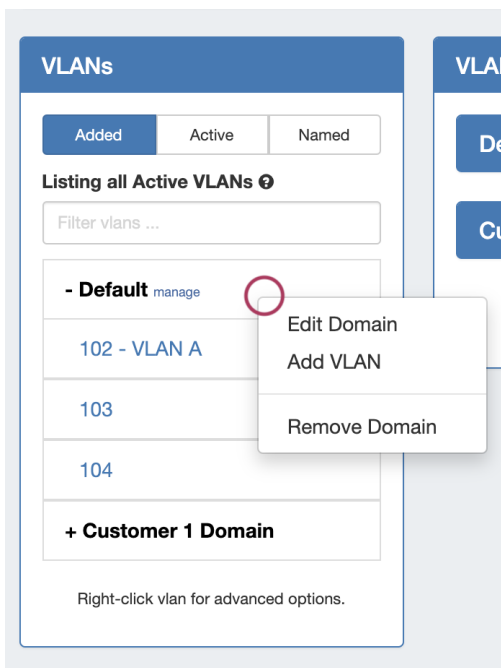
Note: Adding large ranges of VLANs may take a few minutes. Please remain on the page until the process completes.

Add Domain

When done, click Add Domain. The new domain will be added to the VLAN Sidebar, along with any added VLANs. In addition, the manually created range will become a new Numbering Authority range, and able to be used as a template for a future domain.



Edit Domain

From the VLAN sidebar, right-click on the domain to edit and select Edit Domain. This opens the VLAN Advanced Edit Domain panel for that domain.



You may also access the Edit Domain panel directly from **VLAN Advanced** clicking on Edit Domain (List icon) and selecting the desired domain.

VLAN Manage Advanced - Global

Active VLANs Switch to Parent view export to CSV   clear filter >

Edit Domain

Edit Domain Attributes / Metadata

Domain information

Domain Name:

Test Domain 1

Domain range

Numbering Schema:

Automatic Numbering Domain for VLAN Doma

Warning: Updating the numbering domain can delete VLANs that are out of the specified valid range.

Range: 1-1001

Excluded range: 1002-1005

Add VLANs (optional)

VLANs:

1, 3, 5-10

Note: Adding large ranges of VLANs may take a few minutes. Please remain on the page until the process completes.

Cancel Delete Domain **Save Changes**

It Domain	It VLAN	It VLAN Name	It Numbering Domain	Metadata1	Metadata2	Metadata3	Metadata4	Metadata5
Test Domain 1	1	QA1	Automatic Numbering Doma...	test	test	test	test	test
Test Domain 1	2	Name test	Automatic Numbering Doma...	test1	test1	test	test	test
Test Domain 1	3	Test42	Automatic Numbering Doma...	test	-	test	-	-

Here, you can edit the domain name, view its range and range exclusions, and add VLANs to the domain. Enter your desired change(s), then click Save Changes.

Remove Domain

Deleting a domain may be done from either the VLAN Sidebar or from the VLAN Advanced Edit Domain panel.

To delete a domain from the sidebar, right click on the domain name and select Remove Domain.

VLANs

Added Active Named

Listing all Active VLANs ⓘ

Filter vlans ...

- Default manage

102 - VLAN A

103

104

+ Customer 1 Domain

Right-click vlan for advanced options.

Right-click on the domain name to open the context menu:

- Edit Domain
- Add VLAN
- Remove Domain

To delete the domain from the Edit Domain panel, open VLAN Advanced for the Domain, then click Delete Domain.

VLAN Manage Advanced - Global

Active VLANs

Switch to Parent view

export to CSV

Search

clear

filter >

Edit Domain

Edit Domain Attributes / Metadata

Domain information

Domain Name:

Test Domain 1

Domain range

Numbering Schema:

Automatic Numbering Domain for VLAN Doma

Warning: Updating the numbering domain can delete VLANs that are out of the specified valid range.

Range: 1-1001

Excluded range: 1002-1005

Add VLANs (optional)

VLANs:

1, 3, 5-10

Note: Adding large ranges of VLANs may take a few minutes. Please remain on the page until the process completes.

Cancel

Delete Domain

Save Changes

It Domain	It VLAN	It VLAN Name	It Numbering Domain	Metadata1	Metadata2	Metadata3	Metadata4	Metadata5	
Test Domain 1	1	QA1	Automatic Numbering Doma...	test	test	test	test	test	
Test Domain 1	2	Name test	Automatic Numbering Doma...	test1	test1	test	test	test	
Test Domain 1	3	Test42	Automatic Numbering Doma...	test	-	test	-	-	

When deleting a domain, both the domain and all VLANs under it will be deleted. Any IP blocks associated with the deleted domain will have its Domain and VLAN association removed.

Additional Information

For information on working with VLANs, continue on to:

- [Working with VLANs](#)

For a higher level overview of the VLAN Manager see:

- [VLAN](#)